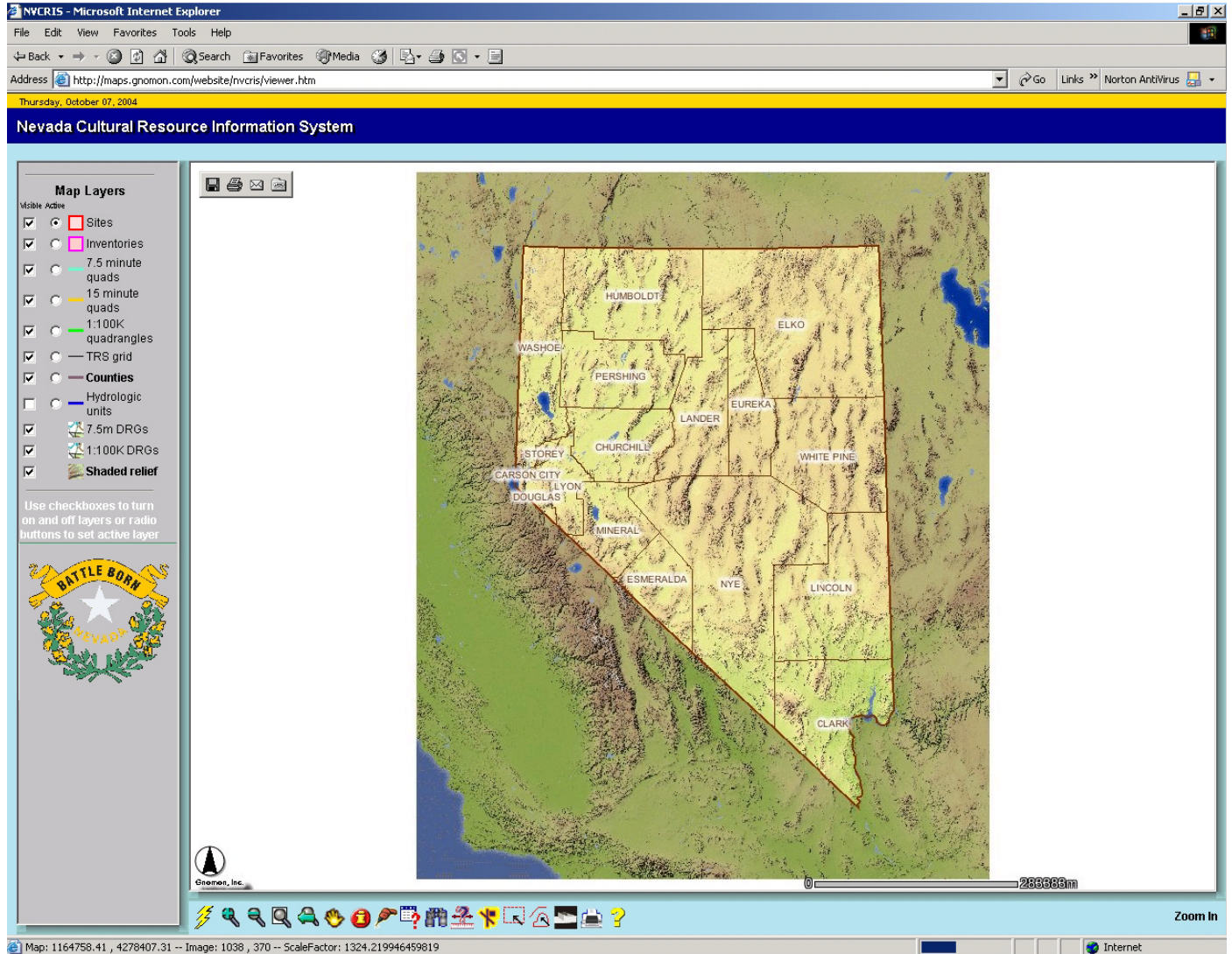


Lesson One

In this lesson, you will explore the simple tools on the NVCRIS toolbar, and familiarize yourself with the ArcIMS environment.

Map Layers

- Navigate to the NVCRIS website



Use checkboxes and radio buttons to make Map Layers **Visible** or **Active**.

Map Layers

Visible Active

☒☐

Sites

☒☐

Inventories

☒☐

7.5 minute quads

☒☐

15 minute quads

☒☐

1:100K quadrangles

☒☐

TRS grid

☒☐

Counties

☐☐

Hydrologic units

☒☐

7.5m DRGs


☒☐

1:100K DRGs

☒☐

Shaded relief

Use checkboxes to turn on and off layers or radio buttons to set active layer



NVCRIS Sites

NVCRIS Inventories

7.5 Minute Quad boundaries

15 minute Quad boundaries

1:100K Quad boundaries

Township/Range/Section Grid

County Boundaries

Hydrologic Units

7.5 minute Topo

1:100K Topo

Nevada Shaded Relief Map

- Un-check the **Shaded Relief** visible box.


The shaded relief background image is no longer visible

- Check the **Shaded Relief** box to make the map re-appear.

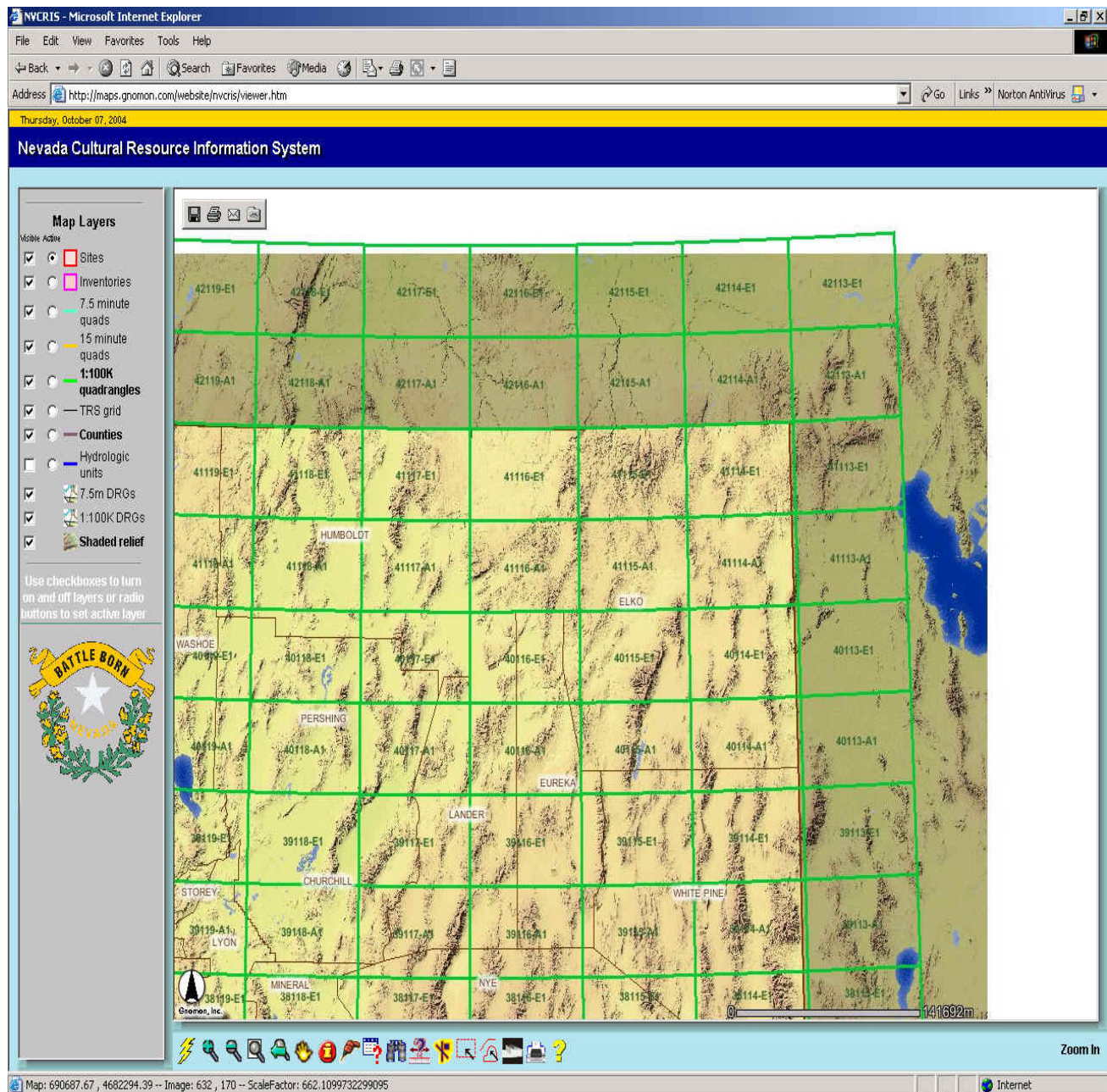
For ease of display, some of the Map Layers are visible only when zoomed to a specific scale.

Zoom and Pan

The zoom and pan buttons allow the user to move through different layers and to different parts of the map, exposing different layers of data.

- Make sure the County layer is visible. ☒ ☐ ☐ Counties
- Select the **Zoom In** Button  and place the cursor on the Elko label.
- Left click.

The 1:100K map index layer is displayed.



Map Layers

Visible Active

- ☒ ☐ Sites
- ☒ ☐ Inventories
- ☒ ☐ 7.5 minute quads
- ☒ ☐ 15 minute quads
- ☒ ☐ 1:100K quadrangles
- ☒ ☐ TRS grid
- ☒ ☐ Counties
- ☐ ☐ Hydrologic units
- ☒ ☐ 7.5m DRGs
- ☒ ☐ 1:100K DRGs
- ☒ ☐ Shaded relief

Use checkboxes to turn on and off layers or radio buttons to set active layer


BATTLE BORN
NEVADA

Map: 690687.67, 4682294.39 -- Image: 632, 170 -- ScaleFactor: 662.1099732299095

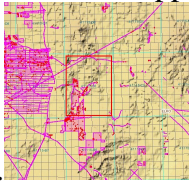
Zoom In

- Left click and drag the cursor from the upper left corner to the lower right hand corner of the 41115-A1 quadrangle.

Release the left mouse button. The view is zoomed to a closer view. The 7.5 minute map index is displayed.

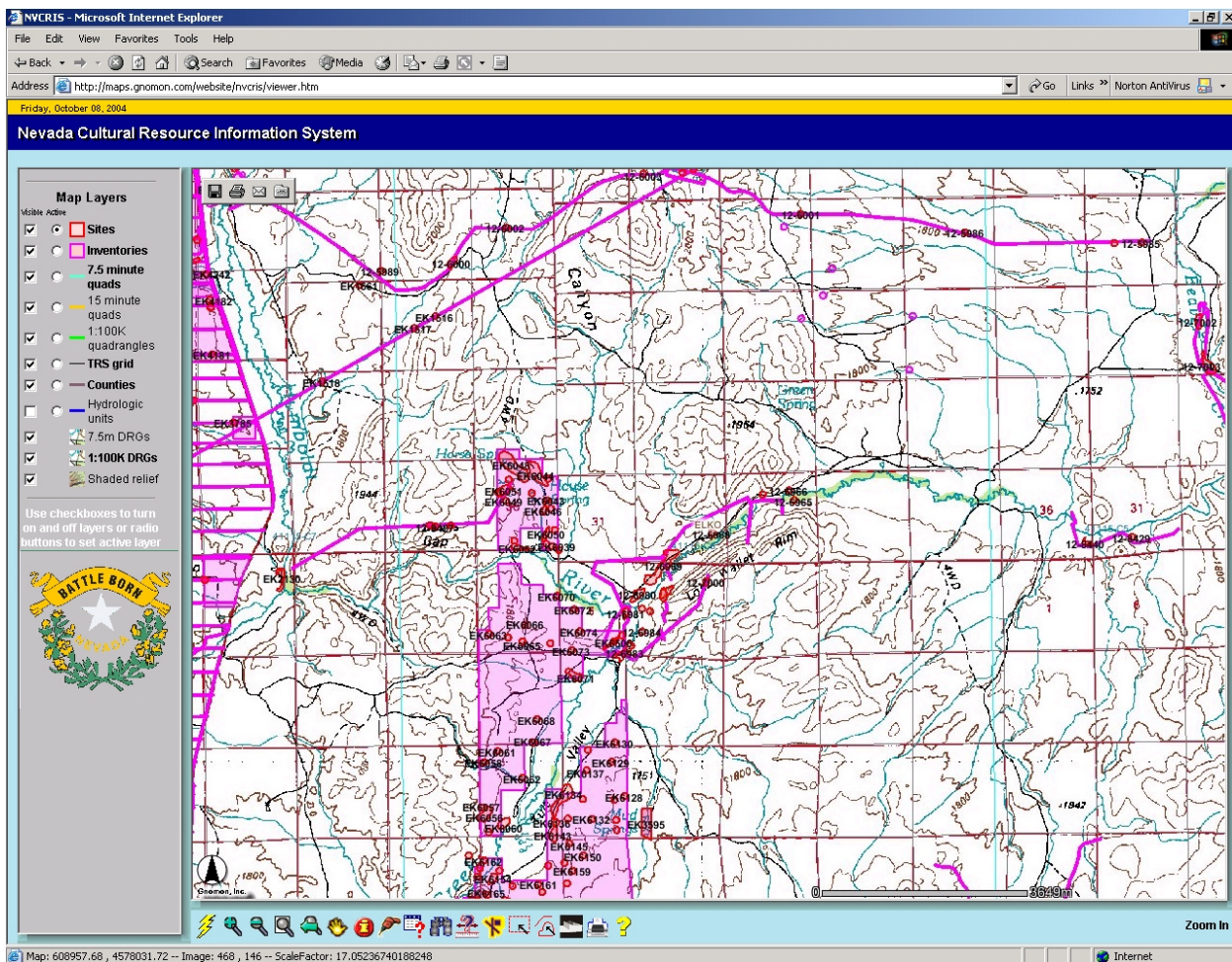
Select the **Pan** Button  and place the cursor on the 41115-C7 quad.

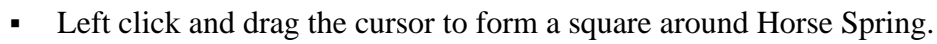
- Drag it to the center of the view.
- Left click and drag the cursor from the upper left corner to the lower right hand corner




of the 41115-C6 quadrangle.



Sites and inventories are shown and labeled on a 1:100,000 quad background

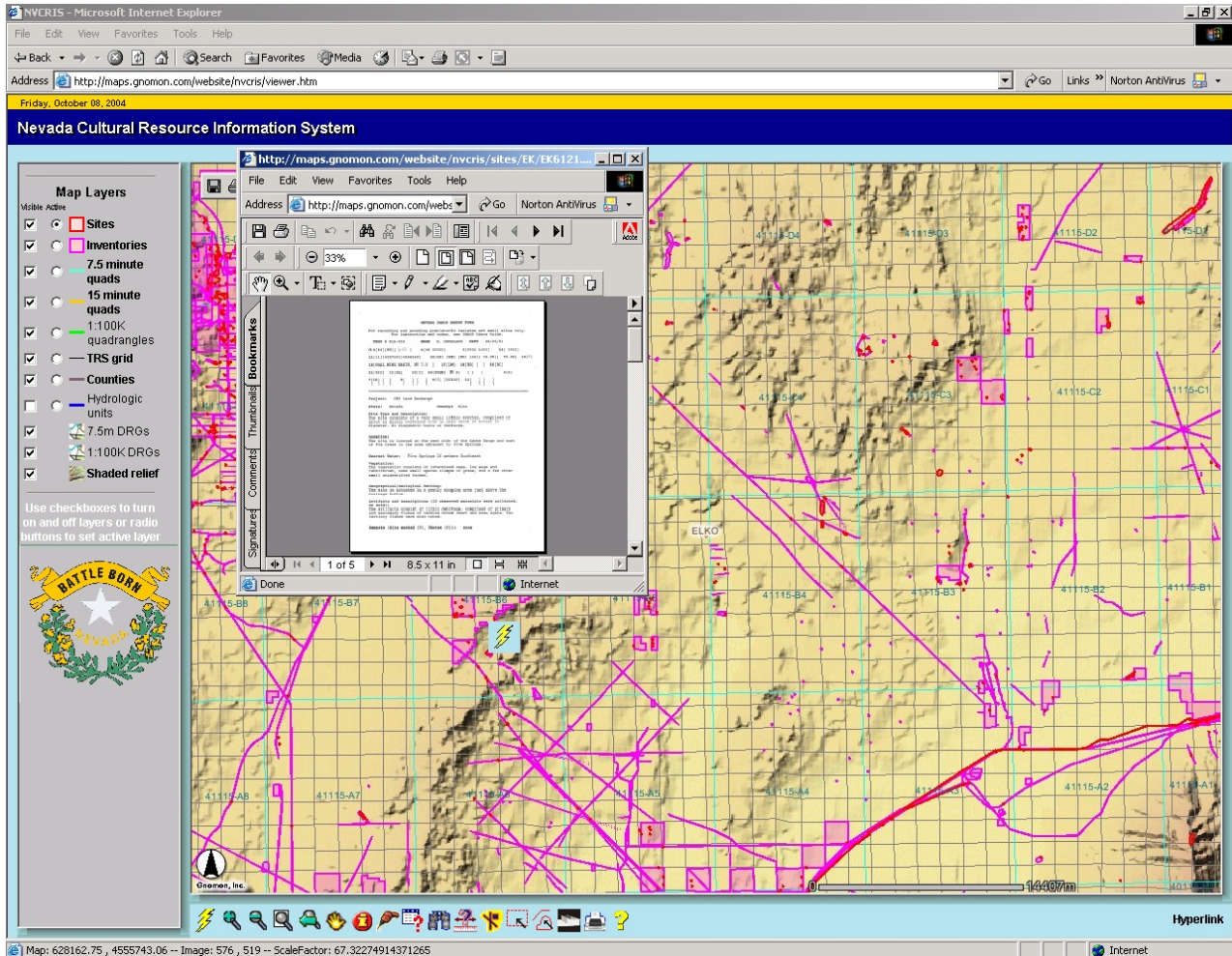




Hyperlink

The **Hyperlink** button  links sites shown on the display to a scanned site record.

- Select the Hyperlink button 
- Make sure the **Sites** Layer is active. 
- Place the icon over a **red** site on the display and left click



A scanned site record is displayed.

To return to the opening view:


- Click the **Zoom to Full Extent** Button. 

Identify and Find

As different layers are revealed on the map, simple queries can be address using the Identify and Find buttons.

- From the full view, make **Counties** active by clicking the active box on Map Layers.



- From the Button bar, select the **Identify** Button  and move the cursor to any spot on the map.
- Left Click, and all County attributes for the selected county are shown.

Counties								
Rec	AREA	PERIMETER	NV_CNTY_	NV_CNTY_ID	COUNTY	CNTYCODE	#SHAPE#	#ID#
1	143000000000	603028.25	7	0	Lander	LA	[polygon]	6

Note that the entry in the county field would serve as a unique identifier.

To search for a specific field or feature within the selected Layer;

- Select the **Find** Button  from the Button bar.

A box requesting an entry string appears below the map.

Find	
Search is Case-Sensitive	
Enter String to Find in Counties: <input type="text"/>	<input type="button" value="Find String"/>

By entering an appropriate strings in the Counties attribute fields and that county will be highlighted on the map.

- Place the cursor in .

Note: The Search is Case Sensitive

- Type in ELKO
- Then click .

Elko County is highlighted on the map, and a box with summarized attributes is placed below.

Map Layers

Visible Active

- ☒ Sites
- ☒ Inventories
- ☒ 7.5 minute quads
- ☒ 15 minute quads
- ☒ 1:100K quadrangles
- ☒ TRS grid
- ☒ Counties
- ☐ Hydrologic units
- ☒ 7.5m DRGs
- ☒ 1:100K DRGs
- ☒ Shaded relief

Use checkboxes to turn on and off layers or radio buttons to set active layer

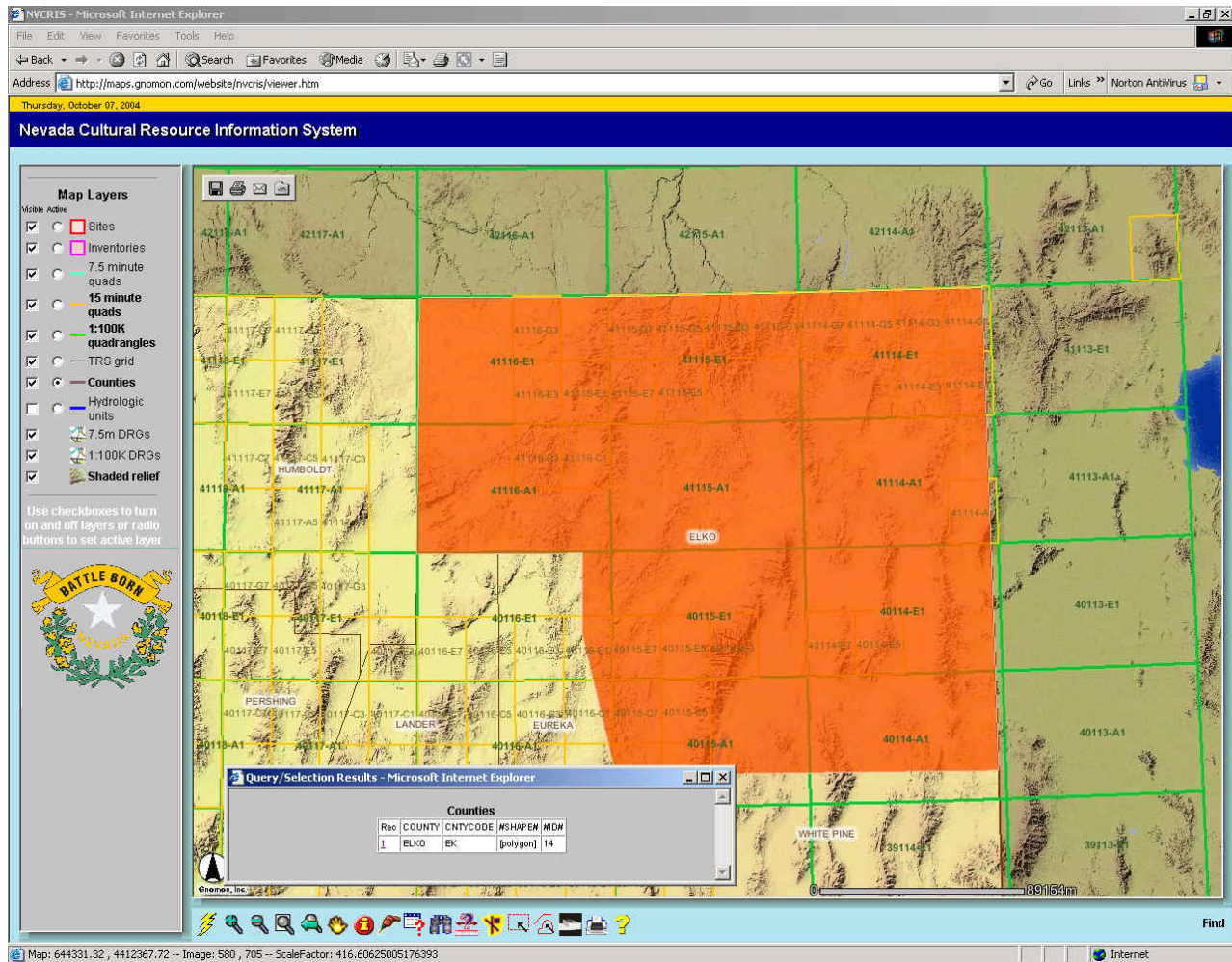
Query/Selection Results - Microsoft Internet Explorer

Counties				
Rec	COUNTY	CNTYCODE	MSHAPE	MIDR
1	ELKO	EK	[polygon]	14

Map: 926185.66 , 3873200.61 -- Image: 792 , 614 -- ScaleFactor: 1591.3980263069245

- Click the blue record attribute [1](#), in the Query Selection Results box.

The map zooms to Elko County.



From here, the user can zoom into the appropriate map level using **Zoom** and **Pan** techniques.

To return to the opening view:

- Click the **Zoom to Full Extent** Button.

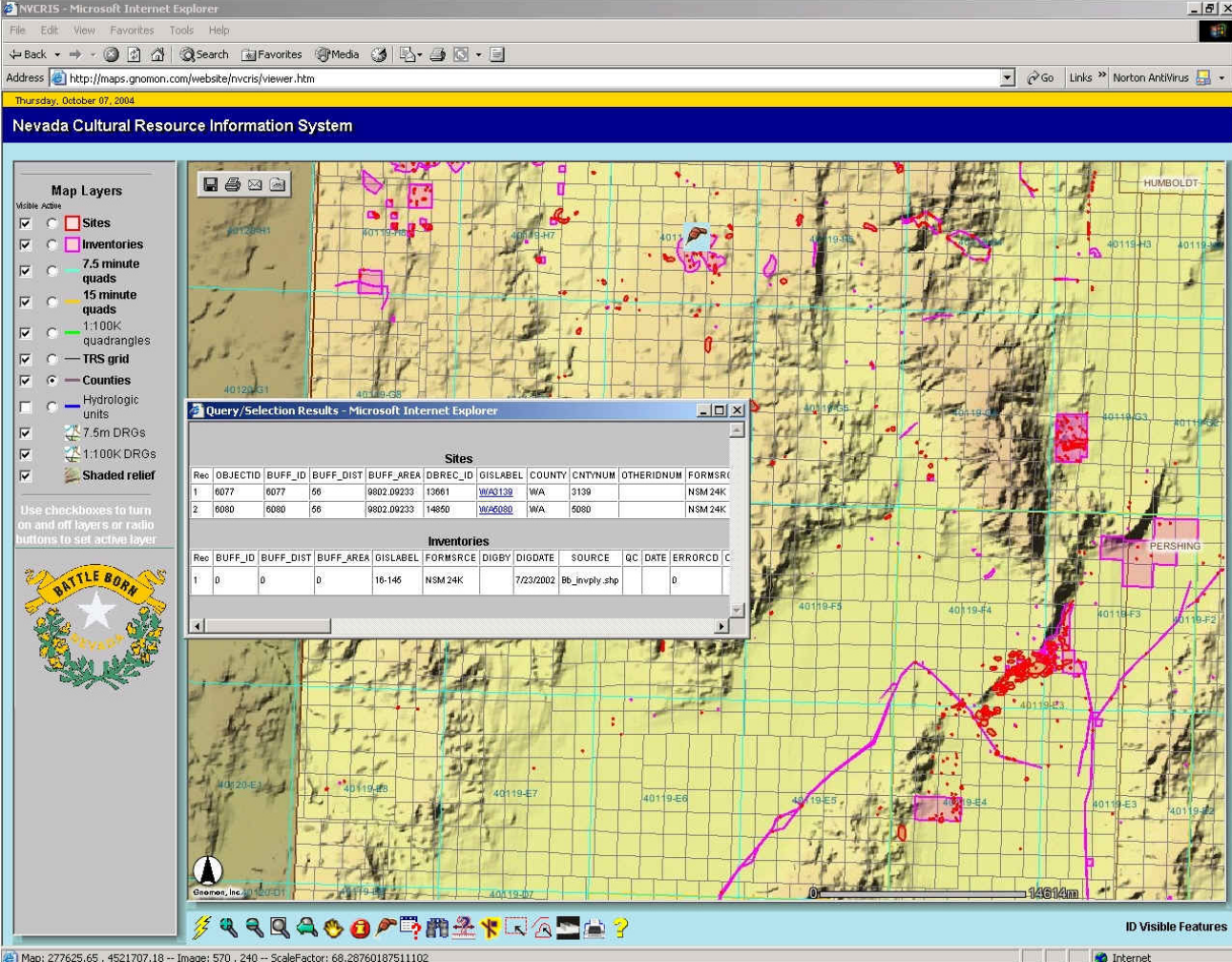


Drill Down

The **Drill Down** tool will identify any sites or inventories under a selected map point.

- Using the **Zoom In** tool , left click and drag a small rectangle over the word Washoe on the map display. 
- Select the Drill Down tool  and place it in an inventoried block containing sites.

A results screen displays all sites and inventories found under the selected drill down point.



Map Layers

Visible Active

- ☒ Sites
- ☒ Inventories
- ☒ 7.5 minute quads
- ☒ 15 minute quads
- ☒ 1:100K quadrangles
- ☒ TRS grid
- ☒ Counties
- ☒ Hydrologic units
- ☒ 7.5m DRGs
- ☒ 1:100K DRGs
- ☒ Shaded relief

Use checkboxes to turn on and off layers or radio buttons to set active layer

Query/Selection Results - Microsoft Internet Explorer

Sites

Rec	OBJECTID	BUFF_ID	BUFF_DIST	BUFF_AREA	DBREC_ID	GISLABEL	COUNTY	CNTYNUM	OTHERIDNUM	FORMSRCE
1	6077	6077	56	9802.09233	13661	WA0138	WA	3139		NSM 24K
2	6080	6080	56	9802.09233	14850	WA0600	WA	5080		NSM 24K

Inventories

Rec	BUFF_ID	BUFF_DIST	BUFF_AREA	GISLABEL	FORMSRCE	DIGBY	DIGDATE	SOURCE	QC	DATE	ERRORCD	C
1	0	0	0	16-146	NSM 24K		7/23/2002	Bb_inply.shp			0	

Map: 277625.65, 4521707.18 -- Image: 570, 240 -- ScaleFactor: 68.28760187511102

- Place the cursor on one of the **Blue Highlighted GISLABEL (Site Number)** fields

A scanned version of the site record appears.

- Select the **Zoom to Last Extent**  button.

The display returns to the last drawn image.

